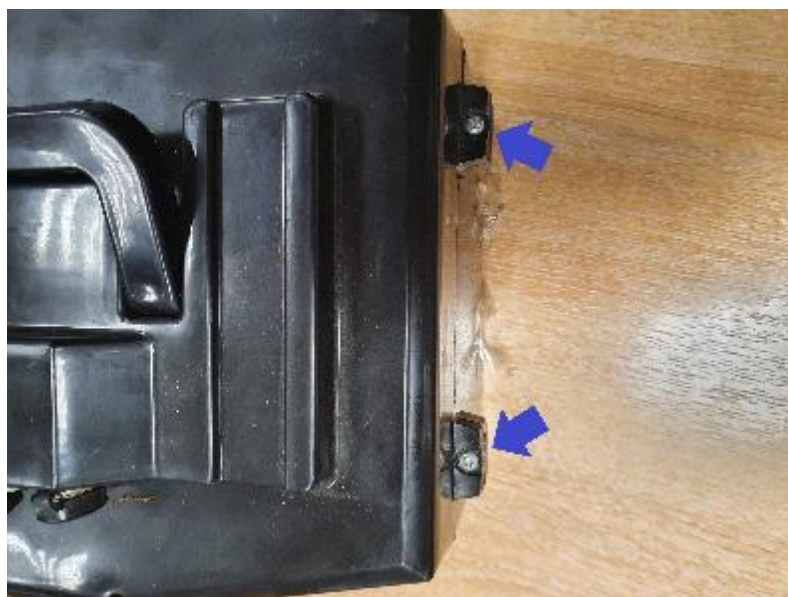


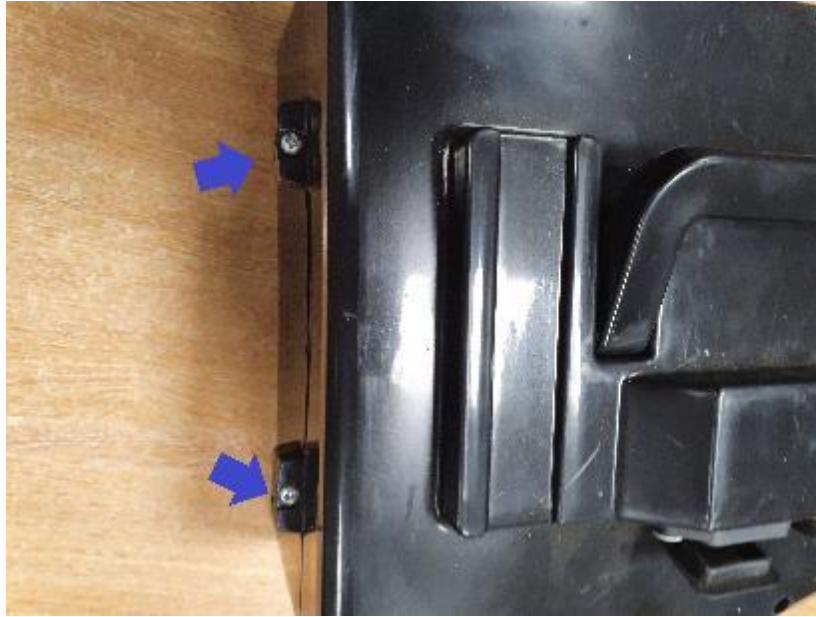
FUN:BIKES

How to change your 800w 36 Volt Mini Quad Fuse Holder

- 1) Remove your battery pack from the quad.
- 2) Using a cross head screwdriver undo the 6 bolts that secure the top of the battery casing.



FUN:BIKES

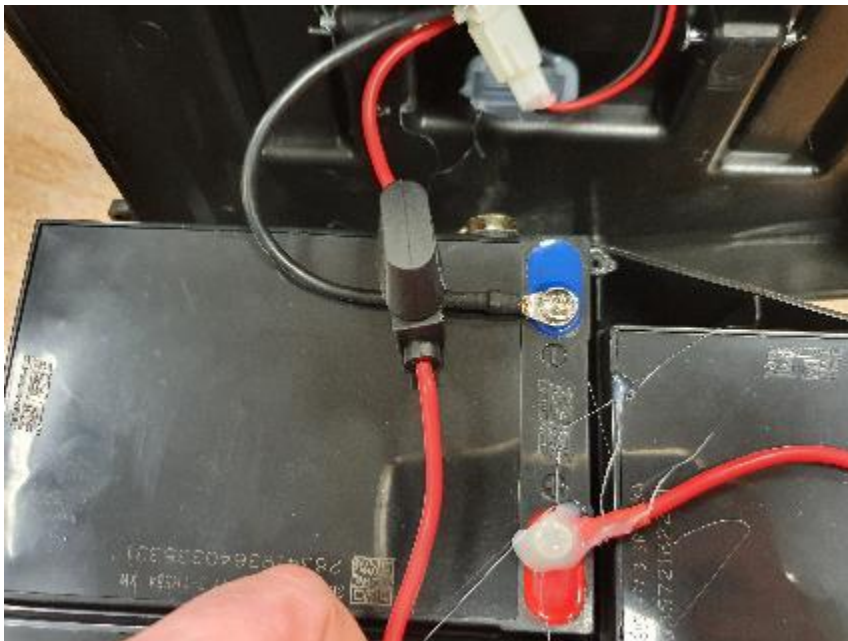


- 3) Once you have removed the 6 screws carefully remove the top of the battery casing (Please be aware there are electrical cables connecting the top section of the case to the batteries in the lower section)



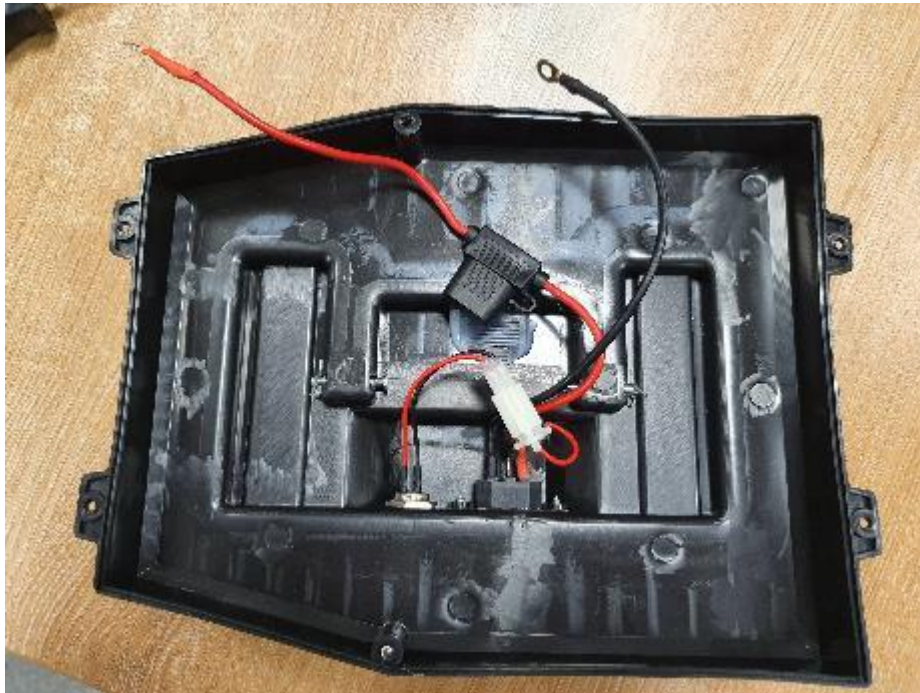
FUN:BIKES

- 4) Trace the positive and negative wires from the 3 pin kettle lead connection in the top half of the battery box and remove the hot glue from battery terminals and unscrew them.

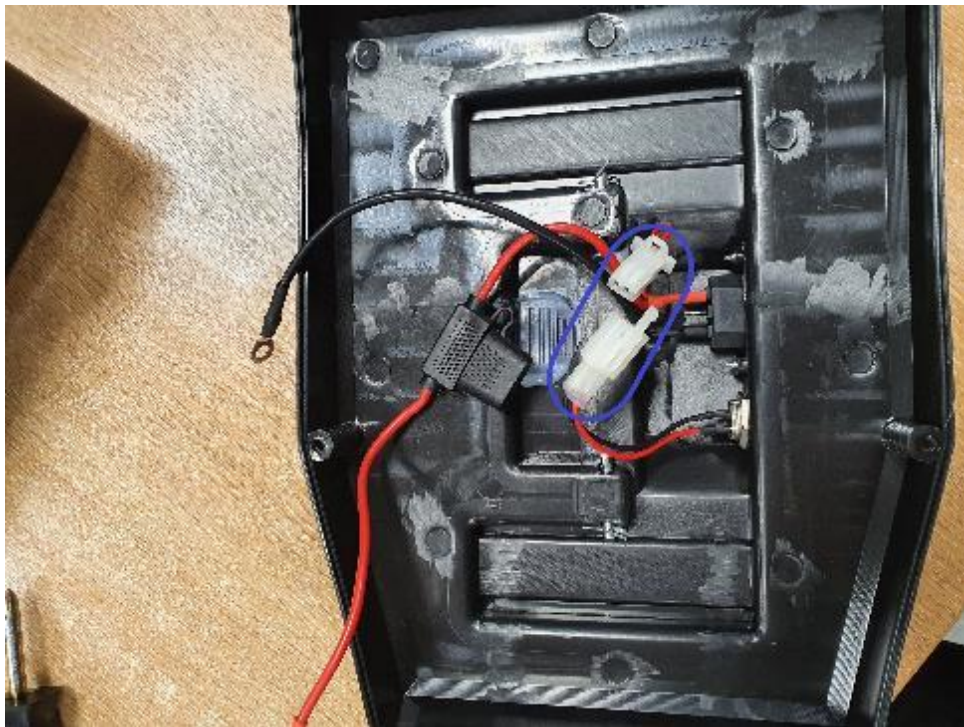


FUN:BIKES

5) Remove the lid from the battery pack

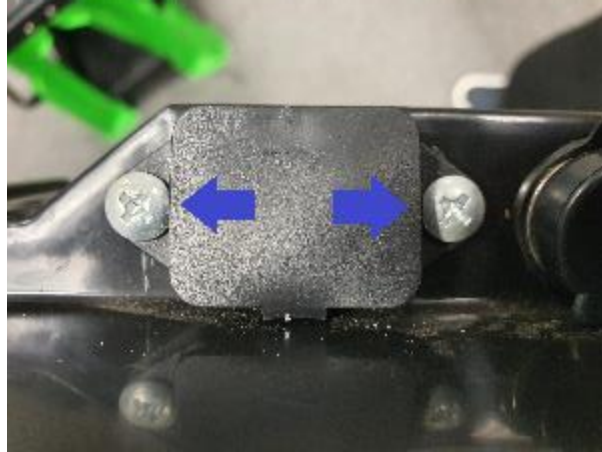


6) Disconnect the white plastic connector from the charge point.

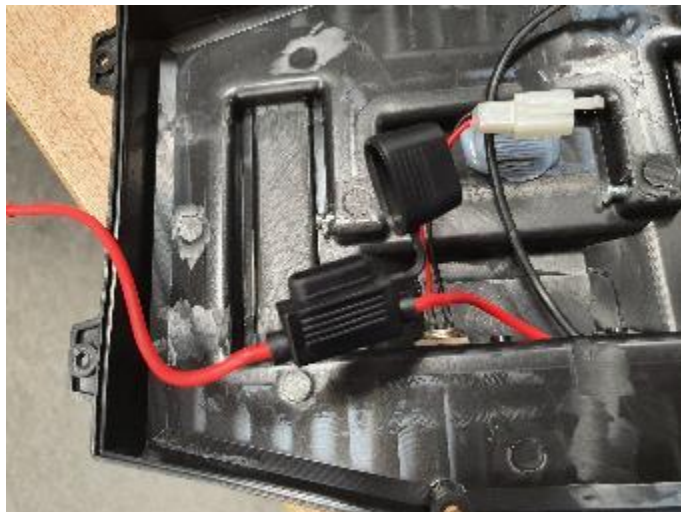


FUN:BIKES

- 7) Remove the 2 screw that hold the kettle lead socket in position on the top half of the case.



- 8) Remove the fuse from the fuse holder and feed the wiring through the case.



FUN:BIKES



- 9) Reverse these steps to fit your new fuse holder. It does not matter if there is no glue over the battery terminals.