

**FUN:BIKES**

**LET THE FUN BEGIN**

## **Maintenance and Service Guide for the KX110F**

This is a simple guide, intended for Funbikes Customers who have purchased the M2R Racing KX110F 110cc 76cm Red Pit Bike, It contains instructional steps on how to how to service and maintain your bike, and includes images to aid you in the process.



# Maintenance and Service Guide for the KX110F

This guide explains how to service  
and maintain your bike.

**What product does this guide apply  
to?**

-M2R Racing KX110F 110cc 76cm  
Red Pit Bike



**FUN:BIKES**

**LET THE FUN BEGIN**

# Introduction

---

These vehicles are a motorised and will therefore require regular maintenance, if you follow this guide it will help you to have trouble free running. The better you look after the bike the better it will look after you!

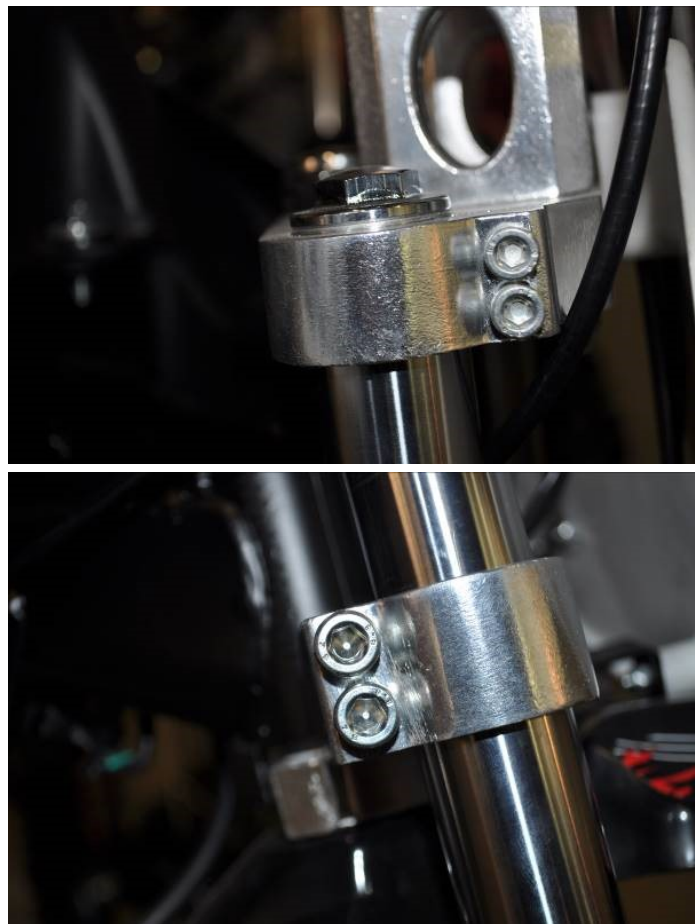
Your FunBikes 110F will require regular services. We recommend that you carry out a full nut and bolt check on the bike before each and every use. This will help to maintain your bike for optimum riding pleasure.

When you are servicing your bike work around in a methodical manor. Don't jump from one part to another or you could well miss bolts. As well as tightening all the bolts on the bike you will also need to inspect parts for wear and damage.

## Step 1

---

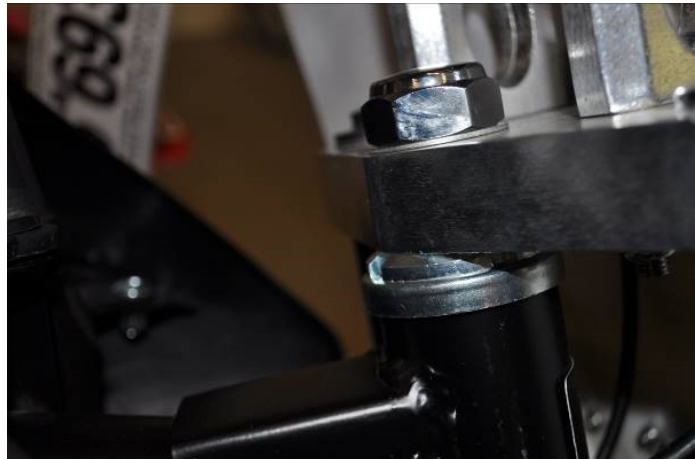
Make sure your forks are level at the top of the yokes, then make sure your yokes are tight around the fork legs.



## Step 2

---

Check your head set has no play in it, tighten if required. Don't over tighten this as you could crush the head set bearings, or make the steering hard to turn.



## Step 3

---

Check your bars are at the correct angle and tighten the bolts.



## Step 4

---

Check your brake and clutch levers are at the correct angle and tight. Inspect your clutch cable for corrosion and fraying if either are present replace.



## Step 5

---

Check your front brake fluid level and condition. It needs to be at least 3/4 of the way up the sight glass on your reservoir. If it is black or discoloured replace and bleed the brakes.



## Step 6

---

Check your front brake caliper is tight and secure, at the same time inspect your brake pads for wear. If they are badly worn replace.



## Step 7

---

Inspect your front tyre for wear and perishing replace as needed.



## Step 8

---

Check the tension of the spokes in your front wheel, if you find loose spokes tighten them.



## Step 9

---

Check the tightness of your front wheel, make sure it spins freely and do not over tighten as you could damage the bearings.



## Step 10

---

Check your front brake disc is tight.



## Step 11

---

Tighten your exhaust manifold bolts.



# Step 12

---

Tighten your heat shield.



# Step 13

---

Check all your engine mount bolts.



## Step 14

---

Clean your air filter.



## Step 15

---

Check your carburettor and manifold bolts are tight.



## Step 16

---

Check your inline fuel filter for a build-up of deposits if there is a build-up of deposits replace.



## Step 17

---

Check your kick start is tight.



## Step 18

---

Check your stand and gear lever are tight.



## Step 19

---

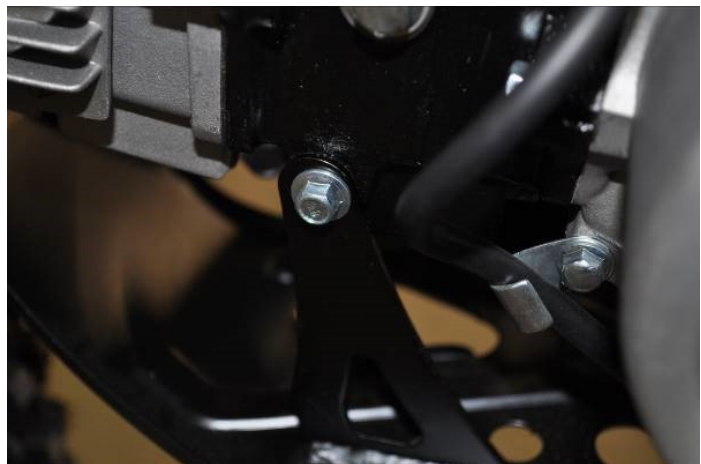
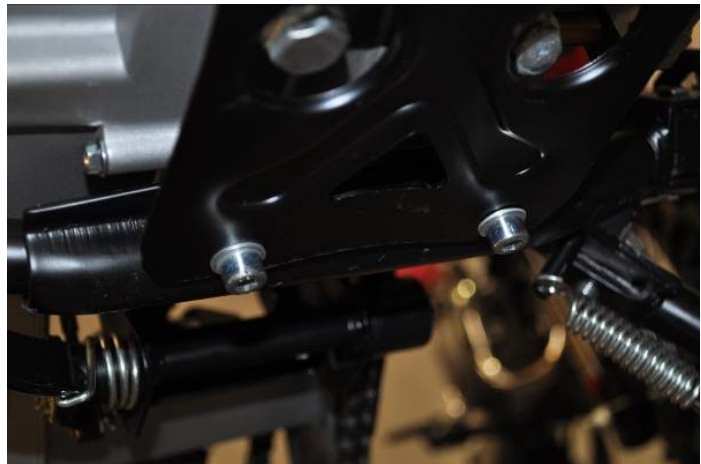
Check all your plastics are secure.



## Step 20

---

Tighten your bash guard and foot pegs.



## Step 21

---

Check your rear brake master cylinder is tight and secure, check your fluid level and colour, if it has become discoloured or black replace.



## Step 22

---

Make sure your rear brake is operating smoothly and is not sticking.



## Step 23

---

Tighten your exhaust end can bracket.



## Step 24

---

Check your upper and lower shock bolts are tight and secure.



## Step 25

---

Check your swing arm is tight.



## Step 26

---

Inspect your rear tyre for wear and perishing, replace as needed.



## Step 27

---

Make sure your rear wheels spokes are all tight.



## Step 28

---

Check your rear sprocket for tightness and wear, replace as needed.



## Step 29

---

Inspect your chain for damage and check your chain tension and adjust accordingly, replace as needed.



## Step 30

---

Make sure your rear brake is secure and inspect the pads for wear, replace if needed.



## Step 31

---

Tighten your rear wheel making sure you do not over tighten as you could crush the bearings.



## Step 32

---

Inspect your rear tyre for wear and perishing, replace as needed.



## Step 33

---

Make sure your chain guide is secure.



## Step 34

---

We recommend you do regular oil changes on the bike. Warm the bike up then turn it off before removing the sump plug. Once all your oil has drained from the bike, replace your sump bolt and refill the bike with 800ml of 10W 40 four stroke oil.



# **FUN:BIKES**

**WWW.FUNBIKES.CO.UK**

**Follow FunBikes  
for Updates**



**If you require more assistance, please feel  
free to contact us:**

**Telephone- 01664 498 642**

**Email- tech@funbikes.co.uk**

